



# FRIENDS WILL BE THE LIGHT TO GUIDE YOU

Verdú, M.A., Zinkgraf, M., Paez, C., Tacconi, L. & García Álvarez, M. A.  
Adapted from Verdú, MA. & Zinkgraf, M. (2022)

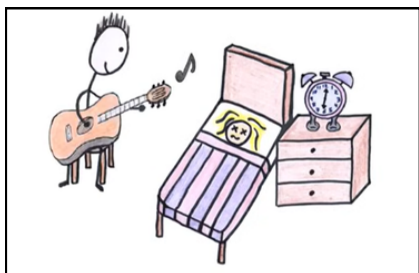
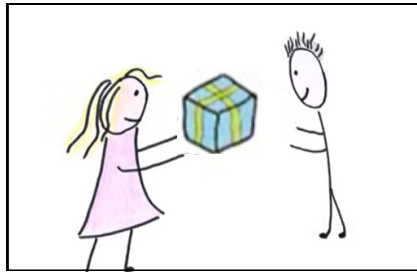
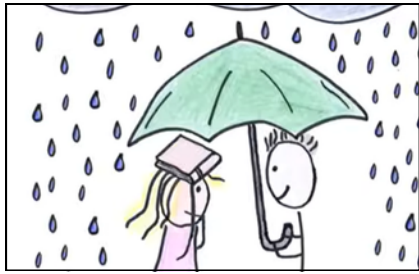
SONG:



1A) In groups, discuss: *What's friendship?* Then, share your ideas.

1B) Answer the questions below:

- Do these pictures reflect your ideas of friendship? Which?
- What other aspects of friendship do these pictures reflect?
- What will the song be about?

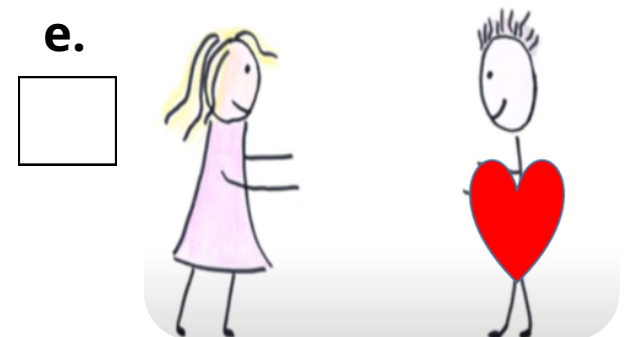


1C) Complete the chart with the ideas mentioned:



2A) Watch the music video and check your predictions in activity 1b).

2B) Watch the video again and number the pictures. Write the number in the  box.



2C) Watch the video again. Write the correct PICTURE letter (a - f) next to the PHRASE in the table below.

PICTURE LETTER 	PHRASE 	MEANING 
.....	<b>FIND YOURSELF STUCK IN THE MIDDLE OF THE SEA</b>	
.....	<b>I'LL NEVER LET GO</b>	
.....	<b>YOU CAN COUNT ON ME</b>	
.....	<b>FRIENDS IN NEED</b>	
.....	<b>I'LL BE THE LIGHT TO GUIDE YOU</b>	
.....	<b>FIND YOURSELF LOST IN THE DARK</b>	

2D) Complete the table in 2C) with the correct MEANING from the box. Careful! There is an extra meaning.

- 1) Te hace llorar
- 2) Amigos que necesitan ayuda
- 3) Nunca te dejaré ir
- 4) Encontrarse perdido en la oscuridad
- 5) Contar con otra persona que te ayude
- 6) Encontrarse perdido en el medio del mar
- 7) Seré la luz que te guíe

3A) Read Stanza 1 and underline what you recognize.

3B) Colour what is repeated in this stanza.

STANZA 1

1 If you ever **find yourself stuck in the middle of the sea**


2 I'll sail the world to find you

3 If you ever **find yourself lost in the dark** and you can't see

4 I'll **be the light to guide you**

5 (We'll) Find out what we're made of

6 When we are called to help our **friends in need**



4A) Link conditions a) and b) and their consequences with an arrow ( ➡ ). Find evidence in the stanza.

**CAREFUL!** There is an extra picture. Which?

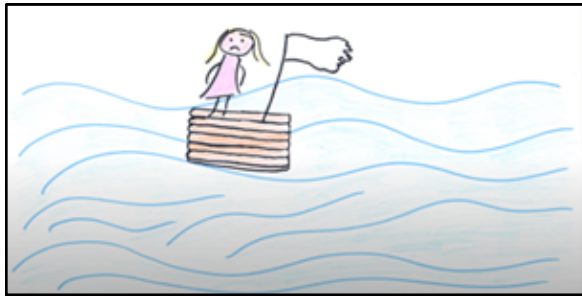
**CONDITION**

**CONSEQUENCE**

IF YOU...

I'LL...

a)



\_\_\_\_\_

\_\_\_\_\_

b)



\_\_\_\_\_

\_\_\_\_\_

1.

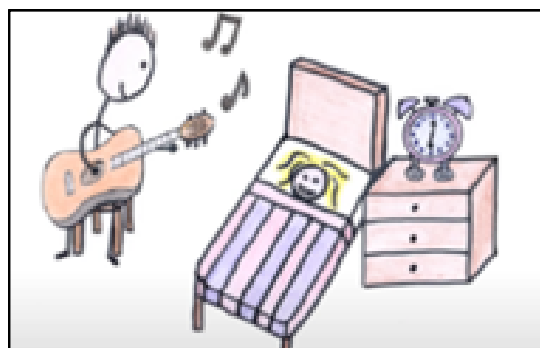


\_\_\_\_\_

\_\_\_\_\_

\_\_\_\_\_

2.



\_\_\_\_\_

\_\_\_\_\_

\_\_\_\_\_

3.



\_\_\_\_\_

\_\_\_\_\_

\_\_\_\_\_

4B) Complete the lines in 4A) with the phrases below. Who does what? Check pronouns.

A. find yourself lost in the dark

C. find yourself stuck in the middle of the sea

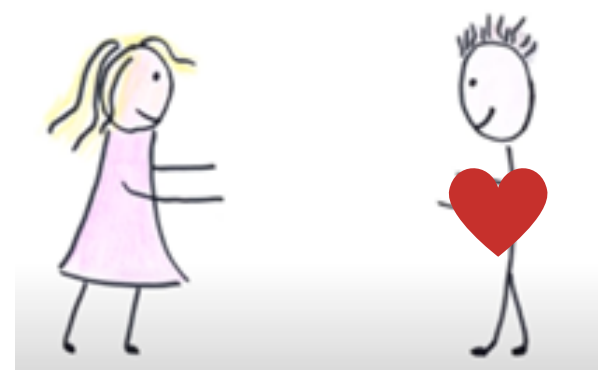
B. sail the world to find you

D. be the light to guide you

5) Read STANZA 1 again and answer the questions:

- a) 'When' se usa para .....
- b) 'I'll + verb' se usa para .....
- c) La situación que 'when' presenta es ¿más o menos posible que la situación que presenta 'if'? .....
- d) Who may be **in need** in STANZA 1? **Is she in need** now? Why? .....
- e) How does he respond? How does he help? .....

**"We find out what we are made of WHEN we are called to help our friends in need"**




**6) True (T) or False (F)? Use lines in the stanza to correct and justify your answer.**

- a) In this first stanza, the author describes extreme conditions his/her friend can experience. \_\_\_\_
- b) The singer tells his friend that if s/he ever finds him/herself in the middle of the desert, he will sail the world to find her. \_\_\_\_
- c.) The singer tells her friend that if s/he ever find him/herself lost in the dark, he will be the light to guide her. \_\_\_\_
- d) Friends don't know how to help you. \_\_\_\_
- e) We find out what we are made of when we help our friends in need. \_\_\_\_

**7A) Read the CHORUS and underline what you recognize.**

CHORUS



7 You can **count on me**  
 8 Like 1, 2, 3  
 9 I'll be there  
 10 And I know when I need it  
 11 I can **count on you**  
 12 Like 4, 3, 2  
 13 You'll be there  
 14 'Cause that's what friends are supposed to do

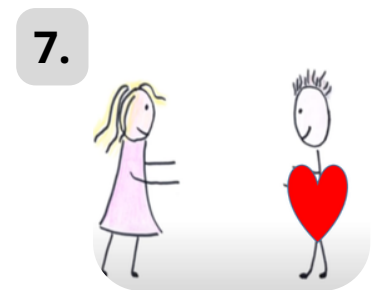
**7B) Answer the questions below:**

- a) ¿Por qué el cantante menciona la idea de "contar con alguien"? ¿En qué líneas hace referencia a esta idea? .....
- b) ¿Qué pronombres se usan para las acciones "count" y "be there"? ¿En qué líneas? .....
- c) ¿Qué objetivo referido a una amistad sana y positiva se expresa en el estribillo? ¿Qué se supone que hacen los amigos por nosotros y nosotros por ellos? .....

**8) Match the pictures with the phrases below.**

- A. **find yourself stuck in the middle of the sea** .....
- B. **(find yourself) lost in the dark** .....
- C. **help our friends in need** .....
- D. **count on me** .....
- E. **I'll be the light to guide you** .....

**CAREFUL!** There are **two** extra pictures.



**9) Answer these questions in groups**

1. Can your friends count on you? Why (not)?
2. Can you count on your friends? Why (not)?
3. Write down the names of the friends you can count on.
4. Is your friendship unconditional? What conditions are there?

**10A) Read the lyrics and cross out one mistake in each line. Check the FIRST STANZA and the CHORUS.**


**CAREFUL!** There are **two correct** lines.

- |  |                                |
|--|--------------------------------|
| 1. If you never find yourself stuck in the middle of the sea     | 7. You can count on them       |
| 2. I'll sail the world to fight you                              | 8. Like 1, 2, 3                |
| 3. If you never find yourself lost in the dark and you can't see | 9. I'll not be there           |
| 4. She'll be the light to guide you                              | 10. And I think when I need it |
| 5. (They'll) Find out what we're made of                         | 11. She can count on you       |
| 6. Then we are called to help our friends in need                | 12. Like 4, 3, 2               |
|  | 13. You'll be here             |

**10B) Write the correct version above.**

**11A) Read the stanza below and underline what you recognize.**

STANZA 2







14 If you're tossin' and you're turnin'  
 15 And you just can't fall asleep  
 16 I'll sing a song beside you  
 17 And if you ever forget how much you really mean to me  
 18 Every day I will remind you  
 19 We find out what we're made of  
 20 When we are called to help **our friends in need**

**11B) Read the stanza again and find two CONDITIONS in the stanza. Colour them!**

**12A) Watch the video. Match the images to the phrases below.**

- a. If you're tossin' and you're turnin' And you just can't fall asleep .....
- b. I'll sing a song beside you .....
- c. If you ever forget how much you really mean to me .....
- d. Every day I will remind you .....

<p><b>1.</b></p> 	<p><b>2.</b></p> 	<p><b>3.</b></p> 	<p><b>4.</b></p> 
--	---	--	--

**12B) Read stanza 2 again and answer these questions.**

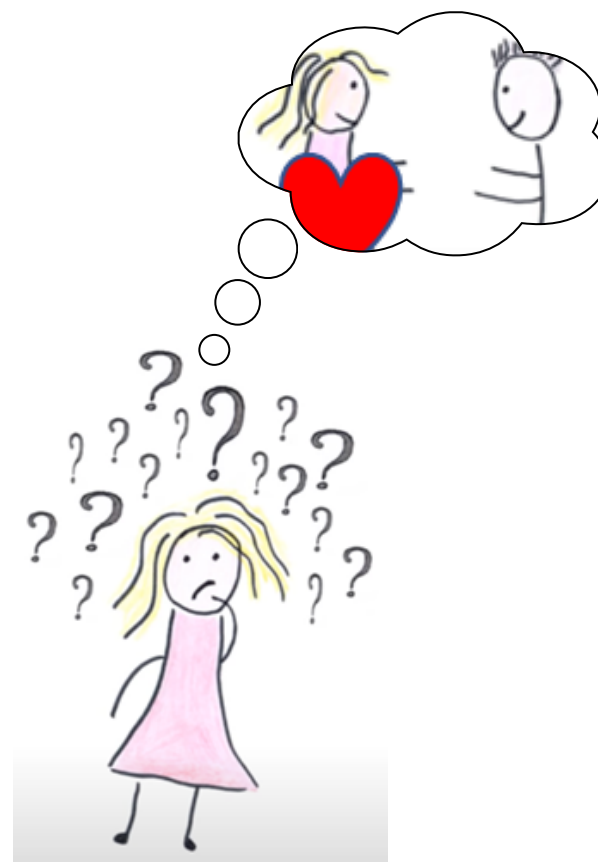
a) En esta estrofa en una de las condiciones, hay una palabra que es lo opuesto a "Remember me" (recordar), ¿cuál es?

Pista: F\_-----

b) ¿Qué verbo podría expresar una solución para esta situación?

Pista: R\_-----

c) ¿Qué entienden de esta imagen? ¿Qué le sucede a ella? ¿Por qué hay signos de pregunta? ¿Por qué esta imagen ("how much you really mean to me") aparece graficada de la siguiente manera?



**13) Complete the table.**

1. <b>We present CONDITIONS with</b>	
2. <b>We express the future in the CONSEQUENCES with</b>	
3. <b>Who are the participants in this song? Who is "I"? Who is "you"?</b>	


**14A) Choose the correct option (a or b). Then, listen and check.**

- 1) 16 **a.** Only / **b.** If you're tossin' and you're turnin'
- 2) 17 And you just **a.** can't / **b.** will fall asleep
- 3) 18 I'll sing a song beside **a.** you / **b.** her
- 4) 19 And if you **a.** never / **b.** ever forget how much you really mean to me
- 5) 20 Every **a.** year / **b.** day I will remind you
- 6) 21 We find out what **a.** we / **b.** they're made of
- 7) 22 **a.** if / **b.** when we are called to help **our friends in need**

**14B) True or False? Justify your answer.**

1. En 16, el autor dice que esta persona no se puede levantar de la cama por cansancio.
2. 17 "And you just can't fall asleep" nos indica que viene durmiendo muy bien.
3. En "I'll sing a song beside you", le promete a su amiga que van a mirar una película juntos.
4. En 19 y 20, le promete que, si alguna vez siente que no le quiere, siempre le va a recordar que están para ayudarse.
5. En 21 y 22, descubrimos de qué estamos hechos cuando nos ayudamos a nosotros mismos, sin mirar para el costado.

15A) Read STANZA 3 and underline the parts that you recognize.



STANZA 3

22 You'll always **have my shoulder** when you cry

23 **I'll never let go**, never **say goodbye**

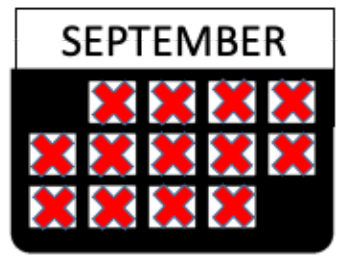
24 You know

15B) Read STANZA 3 and match the images to the phrases in colour in the stanza.



a)..... b) ..... c).....

16A) Find the words ALWAYS - NEVER in STANZA 3. Complete the lines under the pictures.



a).....

b).....

Picture(s): \_\_\_\_\_

Picture(s): \_\_\_\_\_

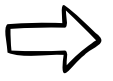
16B) Which picture letters from 15B) go with ALWAYS and NEVER? Add them below the correct calendar.

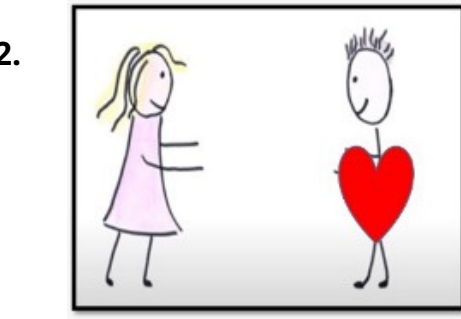
16C) Complete.

- "ALWAYS" means .....
- "NEVER" means .....
- Hay otra palabra parecida a ésta que aparece en muchas de las condiciones de STANZAS 1 and 2. ¿Cuál será? ¿Qué querrá decir? .....

17A) Listen and put the phrases in order. Which phrase does not belong in this song?

- \_\_\_ WHEN WE ARE CALLED TO HELP OUR FRIENDS IN NEED
- \_\_\_ I'LL BE HERE FOR YOU
- \_\_\_ IF YOU EVER FIND YOURSELF LOST IN THE DARK AND YOU CAN'T SEE
- \_\_\_ I'LL BE THE LIGHT TO GUIDE YOU
- \_\_\_ YOU CAN COUNT ON ME
- \_\_\_ I'LL NEVER LET GO
- \_\_\_ IF YOU EVER FIND YOURSELF STUCK IN THE MIDDLE OF THE SEA

17B) Match the pictures and some of the phrases above with an arrow (  ). Careful, there is an extra picture!



18A) Watch and listen to the song with the lyrics and answer: Which new sentence have we not discussed?



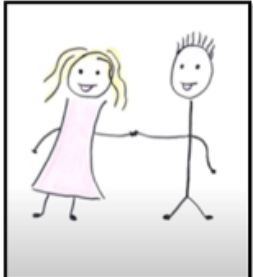

18B) Complete with the correct pronoun (YOU, I, ME).

a) \_\_\_ can count on b) \_\_\_ 'cause c) \_\_\_ can count on d) \_\_\_

**18C) Answer these questions:**

- a. What new idea is presented in this line? .....
- b. What's the meaning of 'cause? .....
- c. What's the difference between blue and violet? .....
- d. Why is this message important? .....

**19) Choose the right phrase for each picture.**

<p>a. We help our <b>friends in need.</b>          b. I'll <b>be the light to guide you.</b>          c. Remember me</p>	<p>1</p>	
<p>a. I have to <b>say goodbye.</b>          b. You'll always have my shoulder          c. You can <b>count on me.</b></p>	<p>2</p>	
<p>a. I'll sing a song beside you.          b. <b>I'll never let go.</b>          c. If you're tossing and turnin'.</p>	<p>3</p>	
<p>a. <b>If you find yourself stuck in the middle of the sea</b>          b. I'll be there.          c. <b>If you find yourself lost in the dark</b></p>	<p>4</p>	

**20) Choose the correct option.**

- a) If you **FIND YOURSELF STUCK IN THE MIDDLE OF THE SEA** means
  - 1. si no podés ver.
  - 2. si te encontrás perdido en la oscuridad.
  - 3. si te encontrás atrapado en el medio del mar.
- b) If you **FIND YOURSELF LOST IN THE DARK** means
  - 1. si te encontrás perdido en la oscuridad.
  - 2. si no te podés dormir.
  - 3. si das vueltas en la cama.
- c) You **HELP OUR FRIENDS IN NEED** means
  - 1. ayudar sin que te lo pidan.
  - 2. ayudar a tus amigos cuando lo necesitan.
  - 3. cantar una canción.
- d) **YOU CAN COUNT ON ME** means
  - 1. podés hacer una cuenta conmigo.
  - 2. podés cantar conmigo.
  - 3. podés contar conmigo.
- e) **I'LL BE THE LIGHT TO GUIDE YOU** means
  - 1. yo seré la luz que te guíe.
  - 2. yo te ayudaré.
  - 3. yo te acompañaré.
- f) **I'LL NEVER LET GO** means
  - 1. nunca te marcharás.
  - 2. nunca te vayas.
  - 3. nunca te dejaré ir.

21A) Find six phrases from this song in the box below.

gotosleepfindyourselfstuckinthemiddleoftheseamakeyoucryfindyourselflostinthedark  
 helpyourfriendsinneedyou'renotaloneyoucancountonmetothisdayI'llbethelighttoguide  
 you'llneverletgo

21B) Write the phrases below, including punctuation marks and separating words.

- a. ....
- b. ....
- c. ....
- d. ....
- e. ....
- f. ....

22) ODD ONE OUT. Which one is not part of...

a) Stanza 1?	find yourself stuck (in the middle of the sea)	find yourself lost in the dark	I'll never let go	I'll be the light to guide you
b) the Chorus, Stanza 2 and Stanza 3?	I'll be the light to guide you	help your friends in need	you can count on me	I'll never let go
c) "Count on Me"?	find yourself stuck (in the middle of the sea)	All I need to know	find yourself lost in the dark	help your friends in need
d) "Count on Me"?	help your friends in need	I'll be the light to guide you	I'll never let go	Remember me


23A) Match the beginning and the end of the phrase.




**CAREFUL!**

There is an extra end. Which?

1.  Find yourself lost

2.  Help our friends

3.  I'll be the light

4.  You can count

to guide you

in the middle of the sea

in the dark

in need

on me

**23B) Answer the questions below.**

- a) ¿Qué celebridades podrían decir estas frases?
- b) ¿ En qué momento?
- c) Compará un personaje de la canción con tus propios amigos. ¿Cuáles de estas frases te dirían tus amigos? ¿Cuáles dirías vos?
- d) ¿Cómo seguirá la amistad de los amigos de la canción?

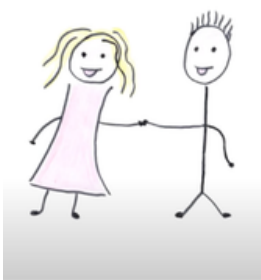
**24) Complete with the correct phrase.**

 **CAREFUL!** There's an **extra** definition.

Frases	¿Qué frase decís cuando querés...?
a.	1. hacerle saber a un amigo que puede recurrir a vos si necesita algo
b.	2. expresar que alguien está a la deriva en el mar sin manera de volver a la orilla
c.	3. hacerle saber a un amigo que vas a ser la luz que lo guíe
d.	4. hacerle saber a un amigo que nunca lo vas a abandonar
e.	5. expresar que hay que ayudar a quienes lo necesitan
f.	6. decirle que no está solo
g.	7. expresar que alguien está perdido y a oscuras

**25) Read the sentences (a- f) and complete them with phrases from the song (1-6). The pictures will help you.**

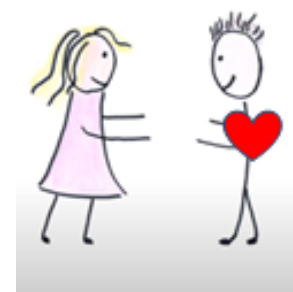
1. **find yourself stuck in the middle of the sea**
2. **(find yourself) lost in the dark**
3. **help our friends in need**
4. **count on me**
5. **I'll be the light to guide you**
6. **I'll never let go**



a. True friends **will never**  
I \_\_\_\_\_ g\_\_\_\_\_.



b. I can't help you; I'm very busy. Don't **c**\_\_\_\_\_  
o\_\_\_\_\_ m\_\_\_\_\_.



c. We usually try to help those people who are  
**i**\_\_\_\_\_ **n**\_\_\_\_\_.



d. Have you ever **found**  
y\_\_\_\_\_ I\_\_\_\_\_  
i\_\_\_\_\_ **the d**\_\_\_\_\_?



e. I'll be **t**\_\_\_\_\_  
I\_\_\_\_\_ **to g**\_\_\_\_\_  
**you** when you feel alone.



c. What can you do if **you**  
**f**\_\_\_\_\_ **yourself**  
**s**\_\_\_\_\_ **in the middle**  
**of the sea?**

**26) Read the story and correct the mistakes.**

Let me tell you a story about friendship! Last summer, my best friend and I went camping to El Bolsón.

It was at night and my friend went walking. Suddenly, he



1. found himself lost in the light;

I couldn't find him. He phoned me. I went looking for him with my torch and, when I finally found him, I told

him:

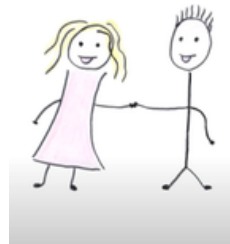


2. "I'll be the light to sing you back to camp." He was really upset, so I told him:

"Don't worry!



3. You can remember me!



4. I'll always let go!

**27) Answer: Which is the most important message in "Count on me" to you? Use phrases in the song.**

**28) True or false? Justify your answers. Which stanza?**

1. Bruno Mars sabe que puede ayudar a su amigo cada vez que él/ella lo necesite. ....
2. Él no sabe si su amigo/a lo guiará como una luz si él se encuentra perdido en la oscuridad. ....
3. Podemos ver si nuestros/as amigos /as son verdaderos/as amigos/as cuando los/as necesitamos. ....
4. Bruno Mars cantará una canción para su amigo/a por su cumpleaños. ....
5. Si el/la amiga de Bruno Mars está perdido en la oscuridad, Bruno nunca lo dejará ir. ... ..
6. Bruno Mars ayudará a su amigo/a a recordar que él/ella es importante para su vida. ....

**29) THE SONG IN MY LIFE... Answer the following questions in Spanish:**

a. What do you do when you **find yourself lost or stuck**?

.....

b. Who can you **count on**? Why?

.....

c. Do you have a best friend? Can you describe him/her?

.....

d. Who can **count on you**?

.....

e. How do you **help your friends in need**?

.....

# ANNEX

- **ACTIVITY 1:** Think of two famous characters that could be in the “Count on me” music video. Here are some ideas to help you.



- **ACTIVITY 2:** Listen to songs about friendship. What’s the title of each song? Who sings them?

Une las parejas  
**Songs about  
Friendship**



Arrastra y suelta  
cada palabra junto  
a su definición.



Con tecnología de Wordwall

- **ACTIVITY 3: What ingredients should a good friend have? Complete the picture with four characteristics.**



- **ACTIVITY 4: Imagine it's your best friend's birthday. Create an Instagram post/story with a nice message for him/her. Look at the examples below.**





markruffalo  Seguir ...

 markruffalo  244 sem  
 What if... we all wish @ChrisHemsworth a happy birthday today. Leave him a message at the beep \*beeeep\* 📱

"I love you, bro!" Wishing you a great birthday with the family and the kids.  
 Ver traducción

 \_whois.tublu\_ 161 sem ❤️

Responder

❤️ 1,8 mill. 💬 6,4 mil ↻ 1 🚩

11 de agosto de 2021



• **ACTIVITY 5: Friendship contract**  
**Useful phrases and expressions**

I'll always...  
 I'll never...  
 Forget you  
 Remember you  
 Help you  
 Say goodbye  
 Count on you  
 Be there  
 Love you  
 Be with you, support you

*If I.... you will ...*  
*If you... I will...*  
*When I ....., I need you to...*  
*When you ....., I will*  
*If you are in need of ....., I'll help you....*  
*You can count on me when....*  
*I'll never let go if/ when ....*  
*I'll be the light to guide you when...*