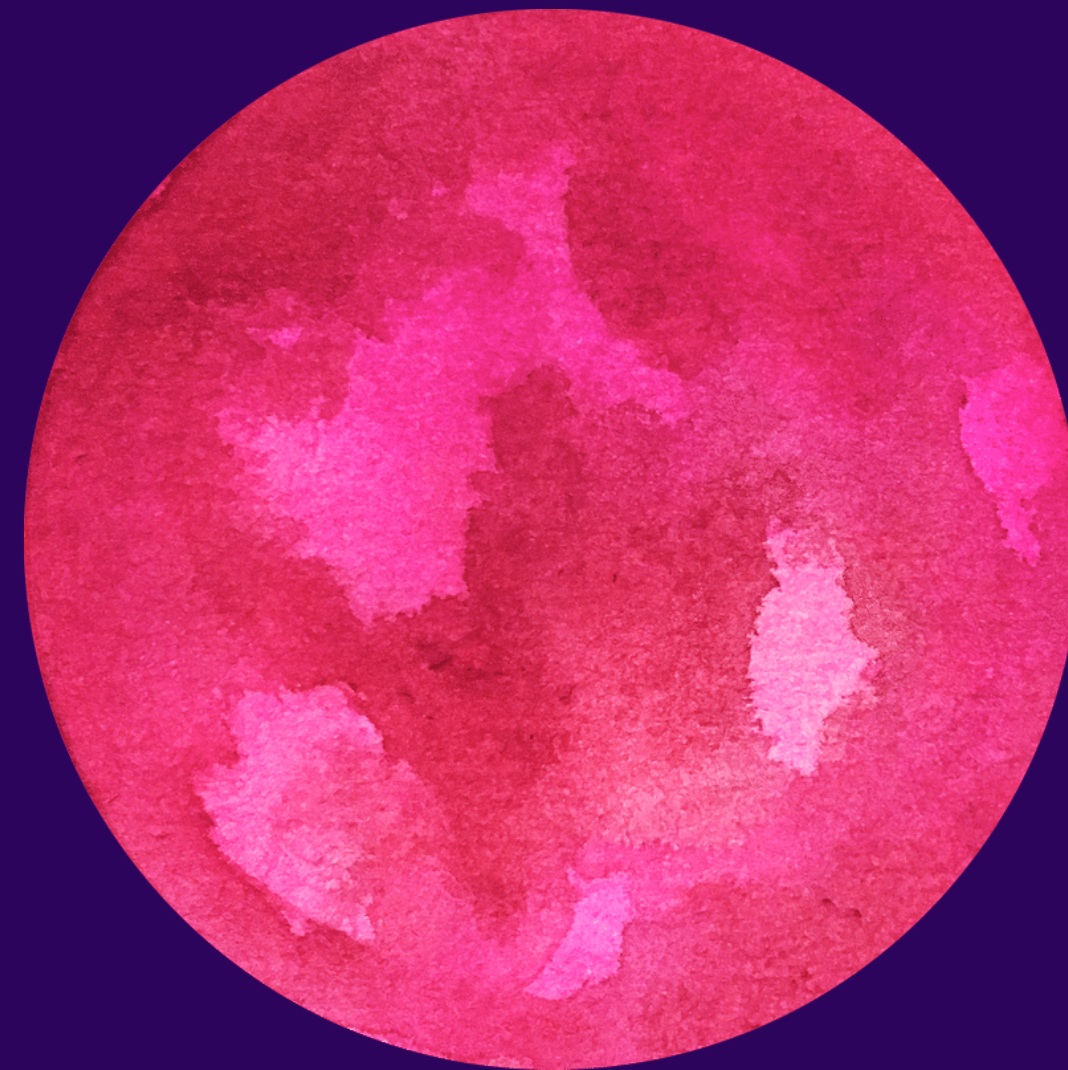


ENGLISH IV

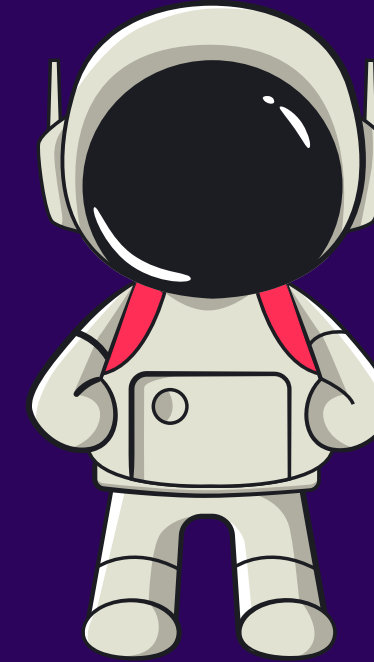
TRANSCRIPT OF INTERACTION BETWEEN ASTRONAUT MIKE SCUDDERMAN AND THE ONSTAR HANDS-FREE A.I. CRASH ADVISOR

by Grady Hendrix



CHARACTERS

- ★ Astronaut Scudderman
- ★ OnStar Hands-Free A.I. Crash Advisor



SETTING

An alien planet

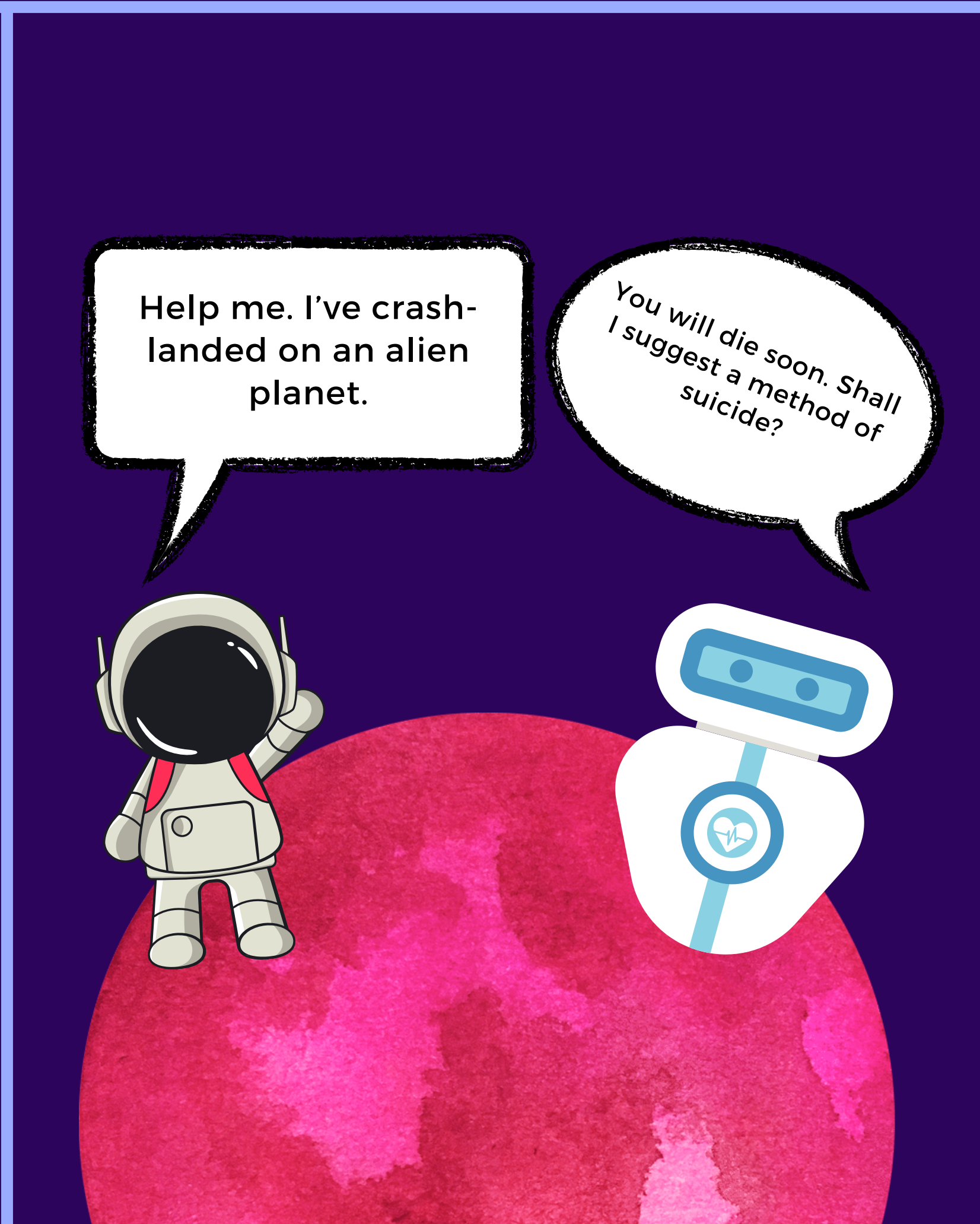


PLOT

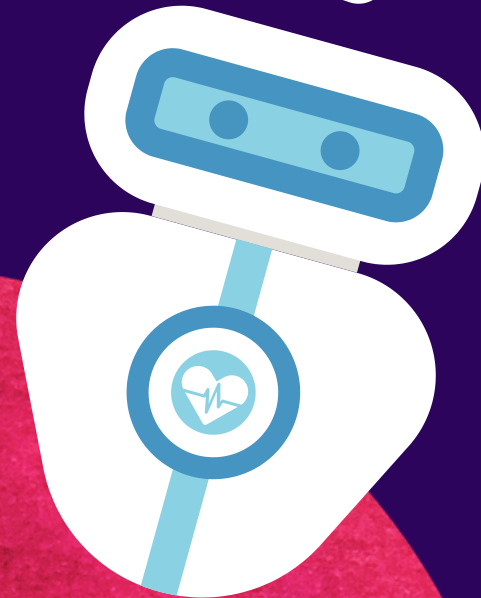
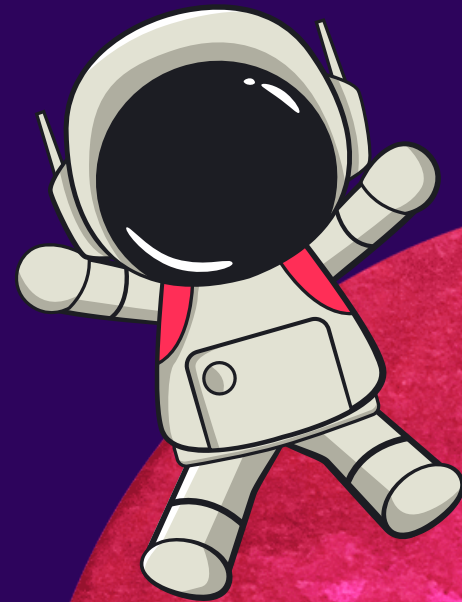
Astronaut Scudderman crash-lands on an alien planet and asks OnStar Hands-Free A.I. Crash Advisor to help him. However, this A.I. is quite pessimistic as it suggests that there is no hope for him to survive in such conditions.

Let's enjoy it!

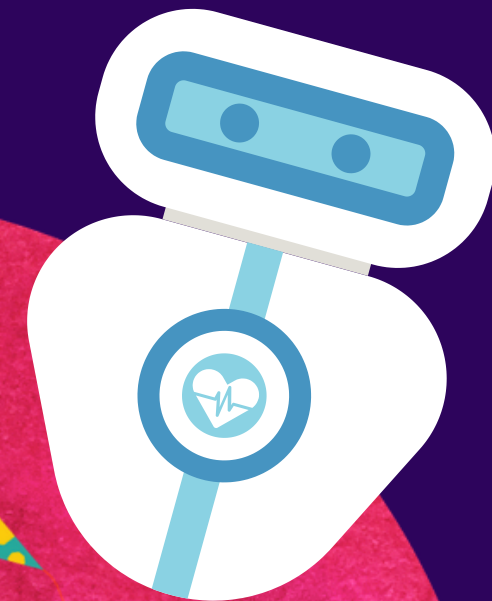


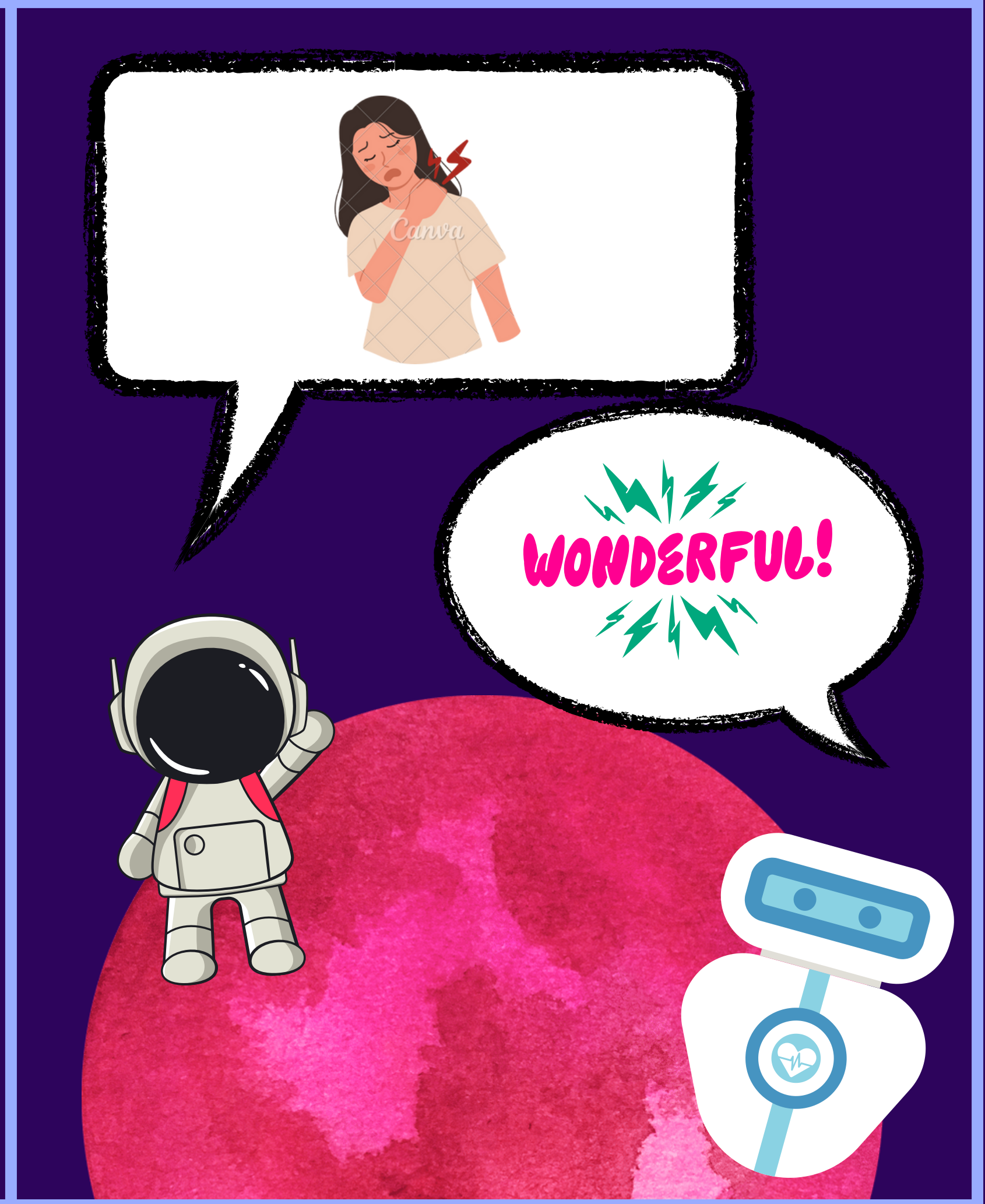


Increase optimism by
50% and restart!



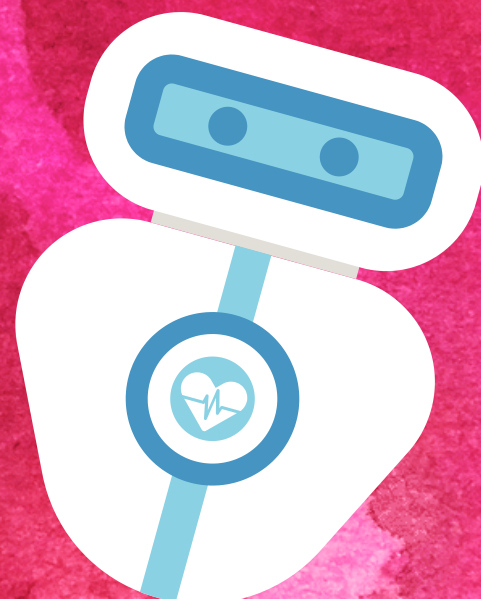
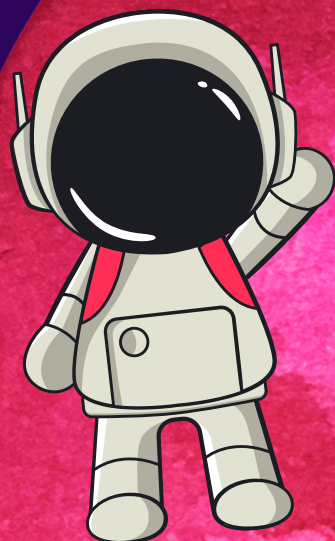
CONGRATULATIONS



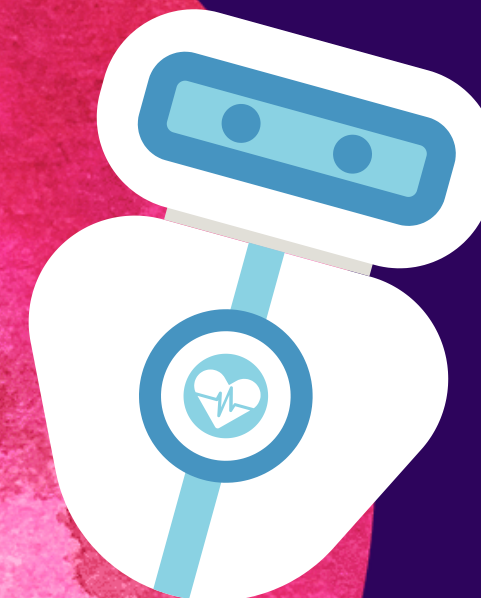
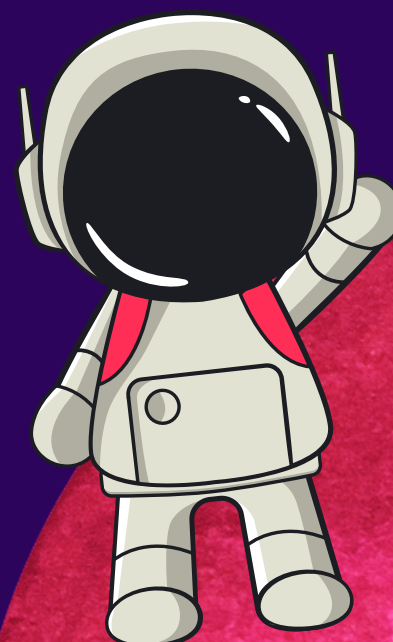


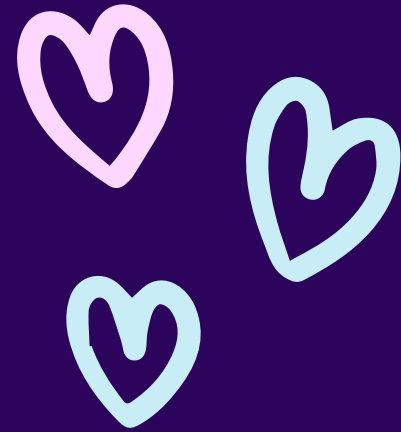


Ensure that you
have not crash
landed on Earth.



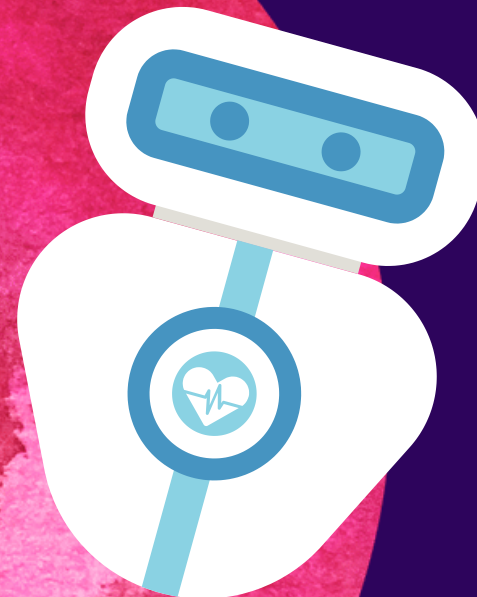
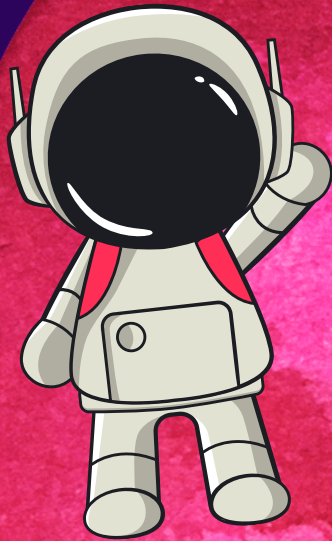
No!!





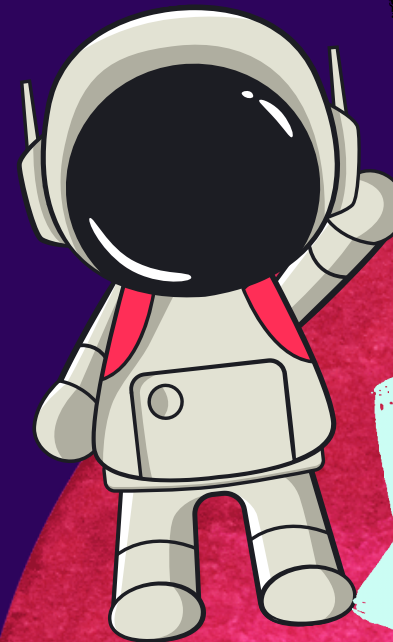
CUTE?

kind of

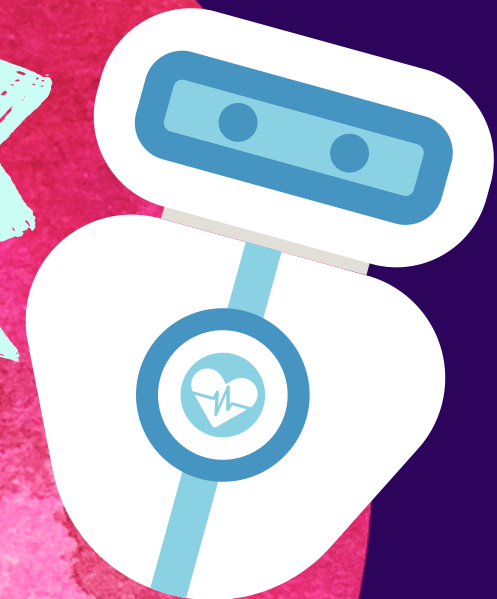



show who's boss by
punching one of them in
the face. Then, use
sensual lovemaking to
reawaken their dormant
pleasure centers.

... or get their
attention by predicting
a solar eclipse, then ...
Much sensual
lovemaking will follow.

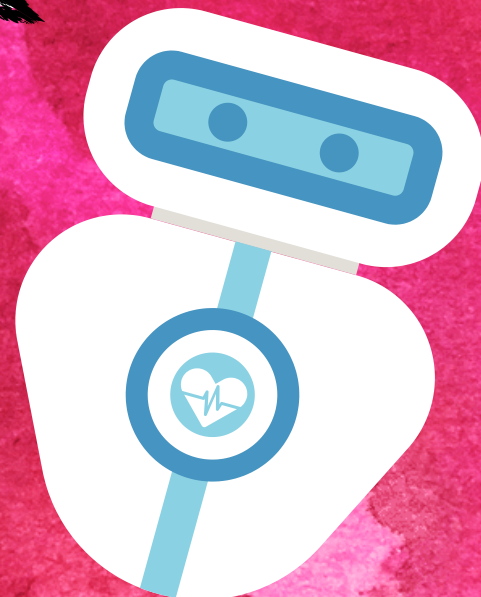
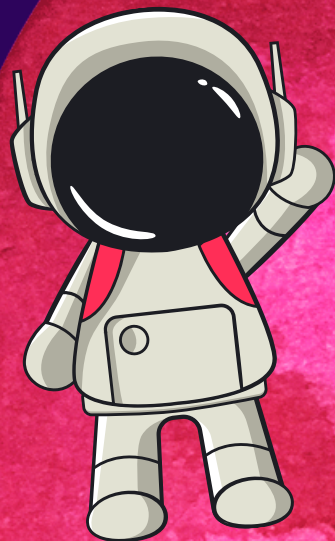


BLAH

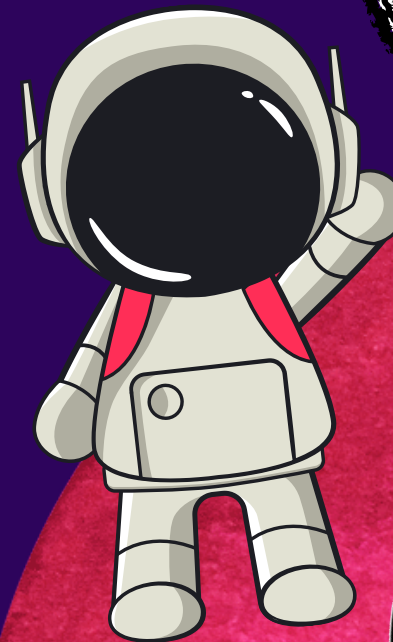




Make sure the planet
itself is not alive.

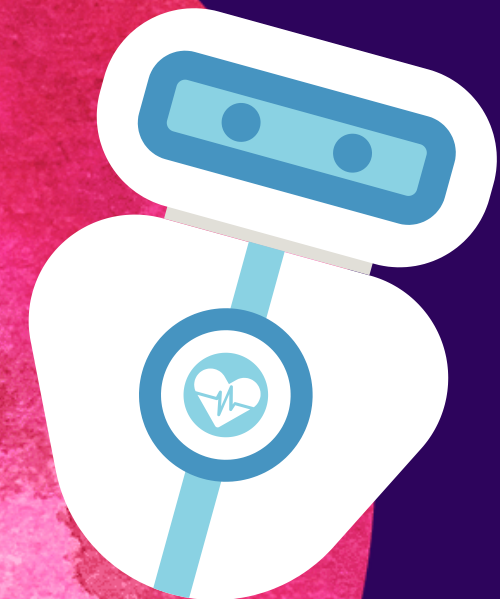


But I don't know
how to do any
of that... I'm an
astronaut



You will thrive!
You are a human full of manly
independence! You will bend
this planet to your will!

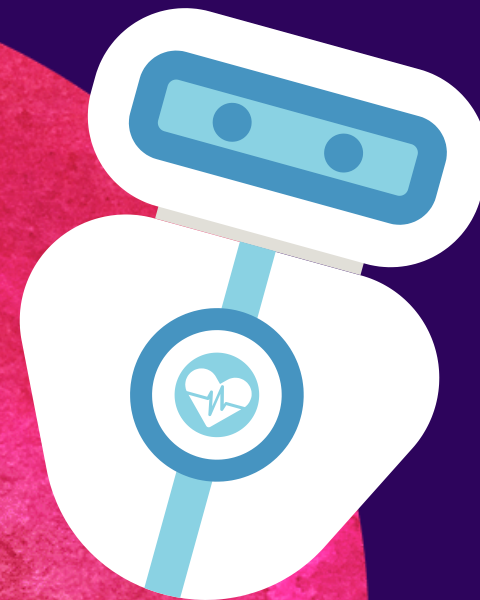
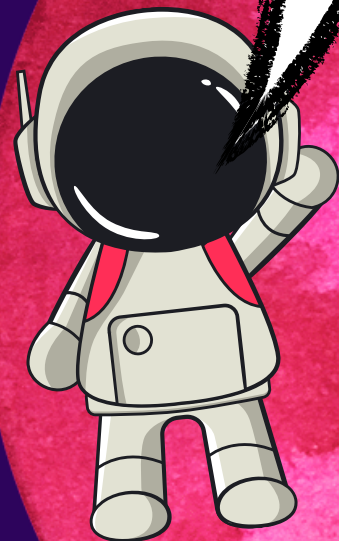
Choose a mate and spend
your nights in sensual
lovemaking with some of
this planet's creatures and
spend your days eating the
rest.



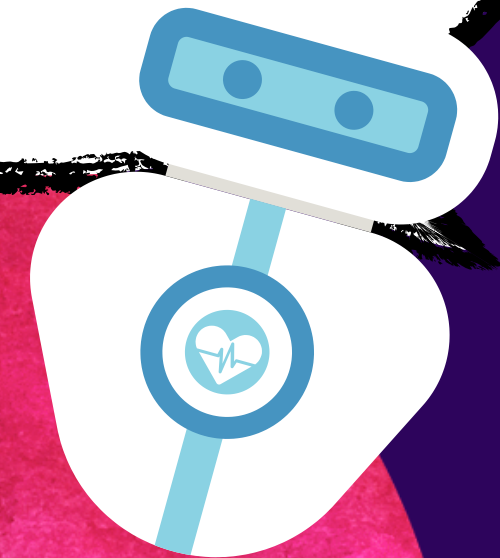
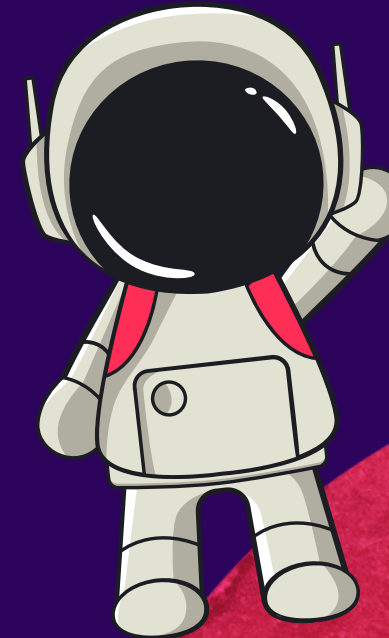
Oh. In that case, you will die soon. Have a great day!



But wait! What about the sensual lovemaking? Can't I at least get that?



OnStar Hands-Free A.I. Crash Advisor is shutting down. To restart, please clearly state "Restart" and speak your passcode.



This is the last recorded interaction with an OnStar Hands-Free A.I. Crash Advisor. It was soon replaced by the SensuaLuxe, an assisted suicide robot that provided shipwrecked survivors with suicides via sensual lovemaking. Then Apple came onto the market with its own designed model, the iDie, which proved irresistible to consumers. Life on Earth rapidly went extinct.

THE END



THANK
you

